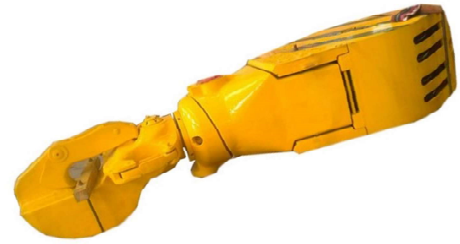


YG Hook Blocks

General Features

- Hook manufactured according to API 8A、API 8C
- Material for load component is high quality alloy steel, which could provide reliable quality
- Suitable for onshore or offshore rigs
- Overall designed, small-dimensioned



Details

The YG series hook blocks were developed to provide the market with more reliable technology and more hoisting performance. Overall design adopted, which could minimize the connection distance between hook and travelling block. This kind of design will be more suit for top drive type of rigs. Material for load components is high strength alloy steel, and the quality is controlled by NDT. Grooving are treated with quenching, which it will be more wear-resisting and long life. Included but not limited by the advantages mentioned, YG series of hook blocks might be your best choice.

Parameters:

Hook Blocks

Model	YG-90	YG-110	YG-135	YG-170	YG-225	YG-450
Max. hook load (kN)	900	1,125	1,350	1,700	2,250	4,500
O.D. of sheaves in(mm)	30(760)	30(760)	30(760)	36(915)	44(1,120)	60(1,524)
Number of sheaves	3	4	4	5	5	6
Wire line Dia. in(mm)	1(26)	1(26)	1-1/8(29)	1-1/8(29)	1-1/4(32)	1-1/2(38)
Major-hook opening (mm)	110	150	150	180	190	220
Spring travel(mm)	152	150	170	140	180	180
Overall Size(L×W×H)(mm)	2,350×830×430	2,640×828×625	2,946×836×652	3,402×950×640	3,450×970×660	4,887×1,600×880
Weight (kg)	2,000	2,310	3,126	4,594	4,732	12,530

Travelling Block

Model	Y-225	Y-315	Y-450
Max. hook load (kN)	2,250	3,150	4,500
Sheaves O.D. in(mm)	44(1,120)	50(1,270)	60(1,524)
Number of sheaves	5	6	6
Wireline Dia. in(mm)	1-1/4(32)	1-3/8(35)	1-1/2(38)
Overall Size (L×W×H) (mm)	2,294×1,190 ×630	2,680×1,350 ×974	3,075×1,600 ×800
Weight (kg)	3,713	6,842	8,135

Hook

Model	G-225	G-315	G-450
Max. hook load (kN)	2,250	3,150	4,500
Major-hook opening (mm)	190	220	220
Spring travel (mm)	180	200	200
Overall Size (L×W×H) (mm)	2,545×780× 750	2,953×890× 830	2,950×890× 880
Weight (kg)	2,180	3,410	3,496